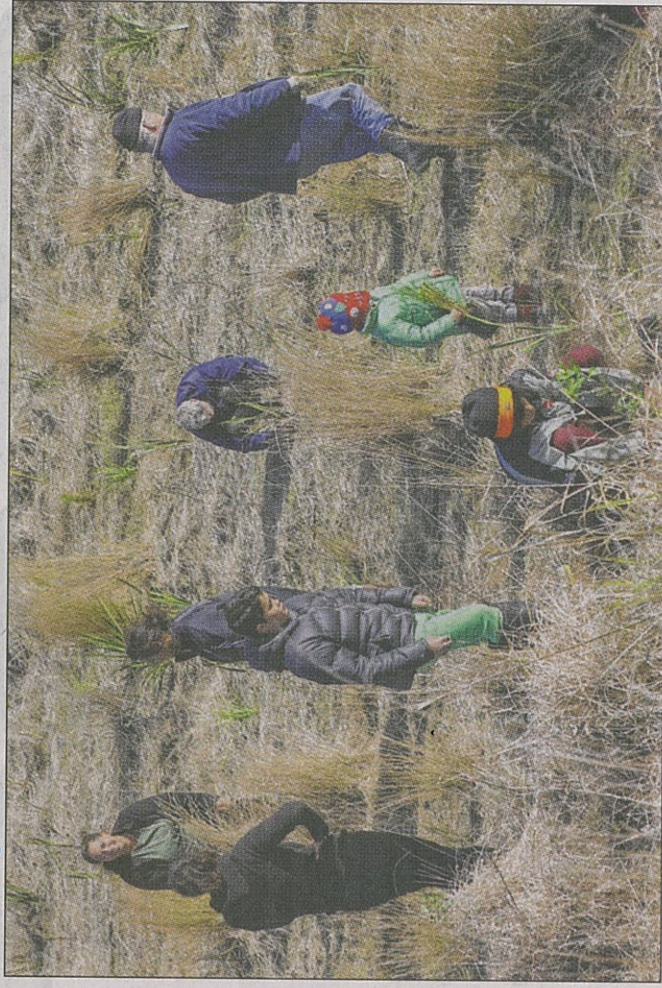




□ Gardeners of all ages took part in the community event where 5000 plants were established along the Whangawehi Stream.



□ Perfect weather for planting greeted volunteers for the Whangawehi Catchment Management Group's massive planting day last last month.

# Great turnout doubles the plants in the ground

A GREAT turnout delighted organisers of a community planting day at Whangawehi with more than twice the expected number of plants established.

Local farmers Pat and Sue O'Brien were thrilled to see 50 volunteers, spade in hand, coming from near and far for the June 28 event.

Among the local community, people from Napier and Gisborne were there to celebrate the first planting initiative of the Whangawehi Catchment Management Group.

Whangawehi secretary Rae Tenahu, said, "I was blown away by the number of people who turned up and the progress we made in one day!"

"I really enjoyed seeing the rangatahi from Te Matau a Maui-Waka Hourua for a time, and all the young tamariki."

"I really enjoyed seeing all these young tamariki who will lead this project in the future."

A core group of volunteers spent the previous week carting trees to the site and preparing holes with post hole borers

to make the job easier for the volunteers. Project co-ordinator, Nic Caviale said the site access was quite difficult with the wet conditions, which made the whole operation tricky and weather-dependent.

"I was planning on planting 2000 trees but we ended up establishing 5000".

Part of the restoration plan is to fence off the entire course of the Whangawehi Stream and establish native trees.

The O'Briens and Grandy Lake Forest have agreed to retire 10ha of riparian margins for conservation planting and

will have established 30,000 native plants when the project is completed.

To achieve this, the Whangawehi group has sought financial and technical support from a wide range of agencies and partners.

The Whangawehi Catchment Management Group is having a second community planting day on Saturday, July 19.

If you are interested in joining them contact Rae Te Nahu at [rae.tenahu@xtra.co.nz](mailto:rae.tenahu@xtra.co.nz)